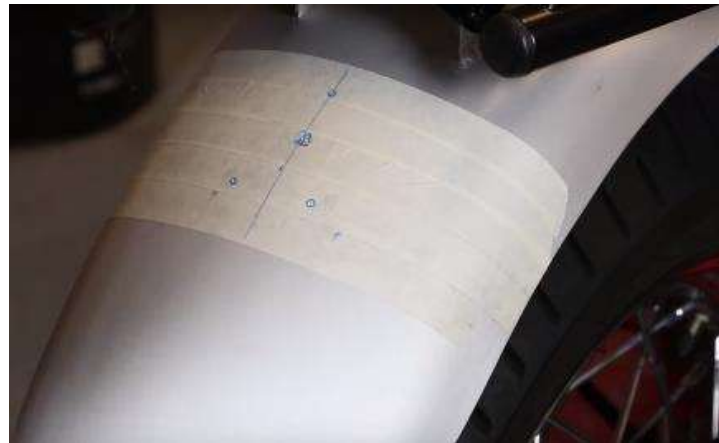
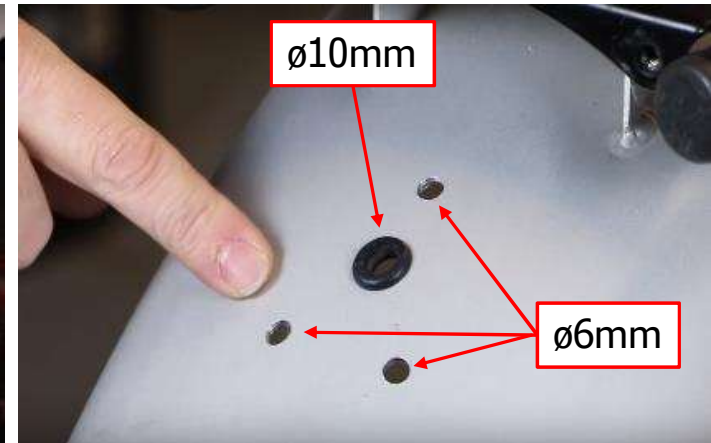




Protéger le g-boue, positioner le feu
Protect the fender, position the light



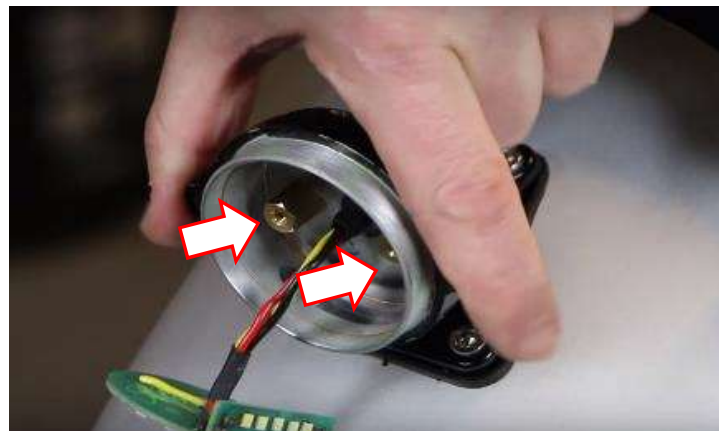
Marquer les trous à percer
Mark the drill points



Monter le reste du feu
Fit the remainder of the light



Monter la base du feu (3 vis)
Fit the light base (3 bolts)



Passer les fils et monter le corps du feu
Run the wires thru and fit the light's body



Monter la plaque LED
Fit the LED board



Monter le reste du feu
Fit the remainder of the light



Prendre le faisceau "plug & play"
Retrieve the "plug & play" loom



Percer et faire passer le faisceau
Drill and pass the loom through



Connecter sur la moto
Connect onto the bike's loom



Connecter sur le feu (sous le g-boue)
Connect onto the light (under the fender)



Tester le fonctionnement
Test the light's operation